

**Darganfod
Dadlau
Dewis**

—
**Discover
Debate
Decide**

Communities, Equality and Local Government Committee

Inquiry into participation in the arts

Questions for organisations



What is the National Assembly for Wales?

The National Assembly for Wales is made up of 60 Assembly Members from across Wales. They are elected by the people of Wales to represent them and their communities, make laws for Wales and to ensure the Welsh Government is doing its job properly.

Welcome

The Communities, Equality and Local Government Committee of the National Assembly for Wales is carrying out an inquiry into participation in the arts, and we want your help.

By 'participation', we mean taking an active role in arts activities, by doing, making and creating, rather than by watching as an audience member.

In 2011, the former Communities and Culture Committee undertook an inquiry into the accessibility of arts and cultural activities in Wales. This new inquiry aims to build on the recommendations that came out of that report, but concentrate specifically on participation in the arts.

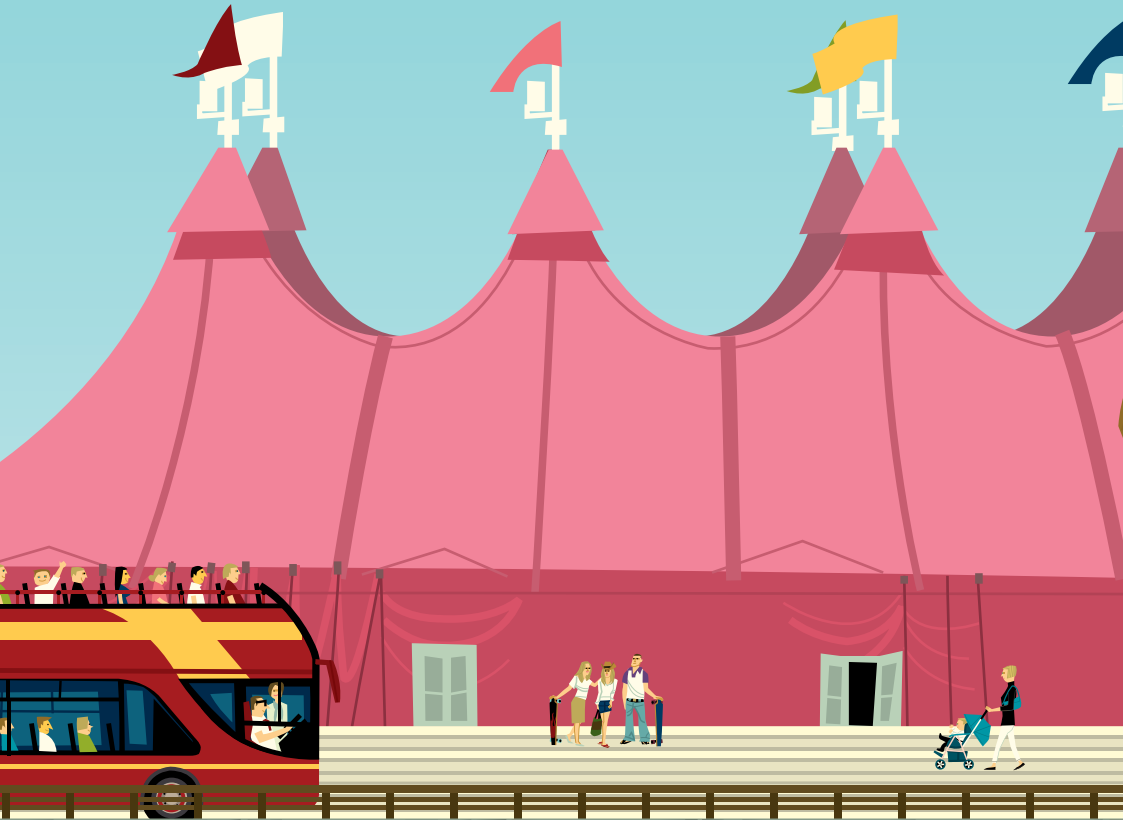
We have been speaking to a number of organisations that told us they are concerned that budget cuts in the arts sector may be having a negative effect on participation in the arts among some groups of people. We want to know what you think.



We would like to hear the views of arts organisations and individuals who participate in the arts. To help us gather the information we need, we have developed two questionnaires, one for participants and one for organisations. It would be really helpful if you could spare a few minutes to fill in the questionnaire below and give us your views.

The consultation is open to any organisation providing arts activities, either funded or voluntary, and anyone who participates in the arts. The inquiry is not focussed on a particular group of people, and we want to hear as many views as possible.

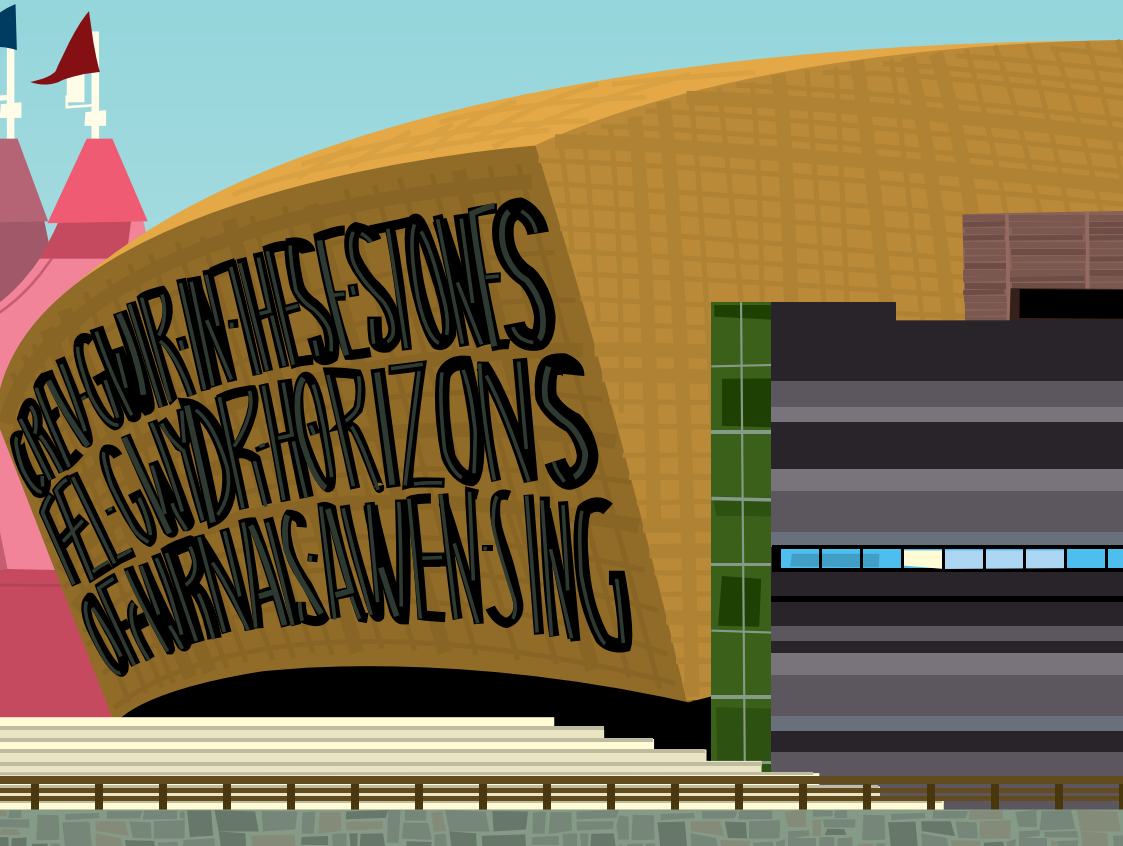
We also want you to be creative in how you respond – for example, you could make a video or put on a play to tell us your views.



To give you a clearer idea of what we'll be looking at as part of this inquiry, below is a list of the areas we'll be covering.

The Committee will:

- assess the impact of budget cuts on participation in the arts in Wales, specifically whether certain groups of people have been affected more than others;
- identify gaps in provision for participation in the arts, both demographically and geographically;
- explore the role of the voluntary arts sector in arts participation and scope alternative funding sources;
- evaluate the policy framework between the Welsh Government and the bodies that distribute arts funding; and,
- look at whether arts organisations in Wales are equipped to deliver the equality objectives of their funders.



Questions

It would really help us if you could answer the following questions.

1 Which groups of people participate in your organisation's arts activities?

.....

.....

.....

.....

.....

2 a) Do you think that budget changes have affected participation in the arts, either positively or negatively?

.....

.....

.....

.....

.....

b) Do you think that certain groups of people have been affected more than others?

.....

.....

.....

.....

.....



3 Are there gaps in provision for people to participate in arts activities, either demographically or geographically?

.....

.....

.....

.....

.....

.....

4 Are there enough funding sources available other than the Arts Council for Wales? Are alternative funding sources accessible?

.....

.....

.....

.....

.....

.....

5 What role does the voluntary arts sector play in promoting participation in the arts in Wales and how can this be supported?

.....

.....

.....

.....

.....

.....



6 Is the strategic relationship between the Welsh Government and the bodies that distribute arts funding effective in increasing participation?

.....

.....

.....

.....

.....

7 All public bodies in Wales will have published a strategic equality plan by April 2012. Do you think that these new public sector equality duties will help to increase participation in the arts among under-represented groups in Wales?

.....

.....

.....

.....

.....



Accessible formats

Copies of this questionnaire can also be obtained in accessible formats including Braille, large print, audio or hard copy from:

The National Assembly for Wales
Cardiff Bay
CF99 1NA

Thanks for your help

Please return this questionnaire to:

Communities, Equality and
Local Government Committee
FREEPOST SWC 3358
Cardiff Bay
CF99 1GY

